

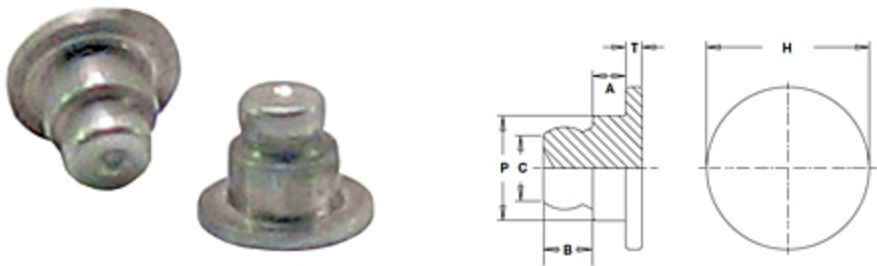


**PennEngineering**  
**Corporate Headquarters – Danboro, PA**  
5190 Old Easton Rd.  
Danboro, PA 18916  
**Phone:** 215-766-8853  
**Toll-Free Phone:** 1-800-237-4736 (U.S. only)  
**Email:** [info@pemnet.com](mailto:info@pemnet.com)  
**Website:** [www.pemnet.com](http://www.pemnet.com)

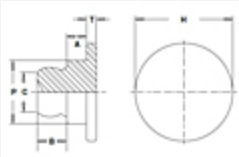
**Part # TA-10-025, TYPE TA™ microPEM® TackPin® Fasteners**

New self-clinching microPEM® TackPin® (Type T™) fasteners for compact electronic assemblies enable sheet-to-sheet attachment, replacing costly screw installation in applications where disassembly is not required. TackPin fastener use eliminates typical screw-related issues (including tapping, cross-threading, torque control, and vibration backout) and ultimately promotes quick and easy installation with minimal hardware. TackPin fasteners can provide a good alternative to welds or adhesives.

[+ more](#)



Specifications		
Fastener Material	Aluminum	
Base Panel Hole Size Code	10	
Top Sheet Thickness Code	025	
Top Sheet Thickness	0.2 to 0.28 mm	.008 to .011 in
Base Panel Min. Sheet Thickness <sup>1</sup>	0.89 mm .035 in	
Top Sheet Hole Size ± 0.05mm/± .002in	1.47 mm	.058 in
Base Panel Hole Size -0.05mm/ -.002in	1.02 mm .040 in	
A ± 0.025mm/±.001in	0.406 mm	.016 in



<b>B ± 0.075mm/±.003in</b>	0.610 mm .024 in	
<b>C Max.</b>	0.89 mm	.035 in
<b>H ± 0.10mm/±.004in</b>	2 mm .079 in	
<b>P ± 0.05mm/±.002in</b>	1.3 mm	.051 in
<b>T ± 0.10mm/±.004in</b>	0.2 mm .008 in	
<b>Min. Dist. Hole C/L to Edge</b>	1 mm	.039 in
<b>Standard Finish</b>	Plain	
<b>For Use in Sheet Hardness</b>	HRB 45 or Less (Hardness Rockwell “B”	Scale) HB 84 or Less (Hardness Brinell)
<b>CAD Supplier</b>	PennEngineering® (PEM®)	

<sup>1</sup> 0.89 mm/.035 in for blind holes and 0.5 mm/.020 in for thru holes.